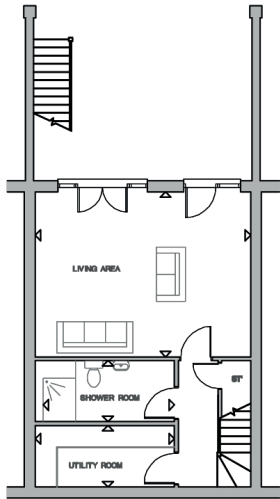
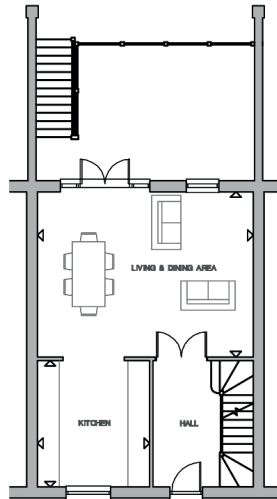


95 Railway Street, Hertford SG14 1RP



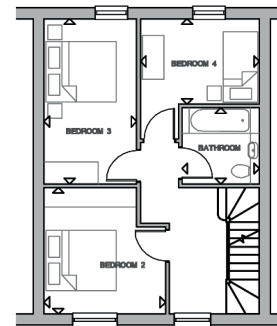
LOWER GROUND FLOOR

Living Area	5.91 x 4.55m	19'4" x 14'11"
Shower Room	3.59m x 1.68m	11'9" x 5'6"
Utility Room	3.81m x 1.7m	12'6" x 5'7"



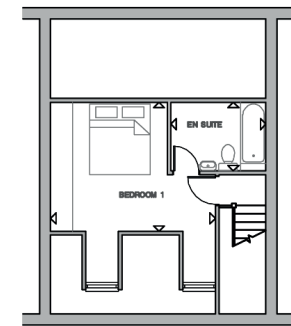
GROUND FLOOR

Living & Dining Area	5.91m x 4.55m	19'4" x 14'11"
Kitchen	3.08m x 3.48m	10'1" x 11'5"



FIRST FLOOR

Bedroom 2	3.35m x 3.48m	11' x 11'5"
Bedroom 3	2.56m x 4.55m	8'5" x 14'11"
Bedroom 4	3.25m x 2.35m	10'8" x 7'8"
Bathroom	2.1m x 2.1m	6'10" x 6'10"



SECOND FLOOR

Bedroom 1	4.55m x 3.56m	14'11" x 11'8"
En Suite	2.6m x 1.9m	8'6" x 6'3"