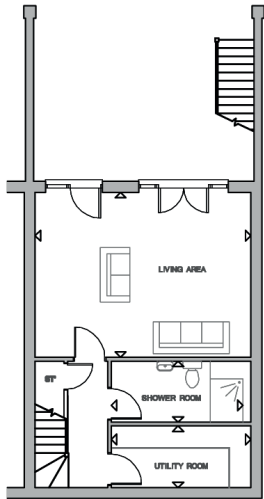


97 Railway Street, Hertford SG14 1RP

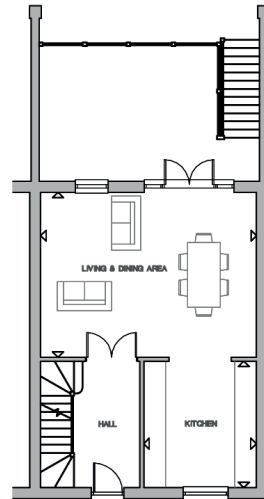


LOWER GROUND FLOOR

Living Area
5.91 x 4.55m 19'4" x 14'11"

Shower Room
3.59m x 1.68m 11'9" x 5'6"

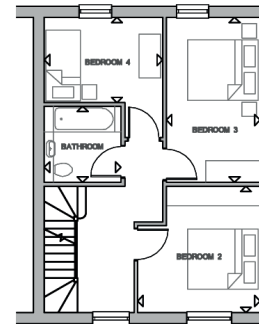
Utility Room
3.81m x 1.7m 12'6" x 5'7"



GROUND FLOOR

Living & Dining Area
5.91m x 4.55m 19'4" x 14'11"

Kitchen
3.08m x 3.48m 10'1" x 11'5"



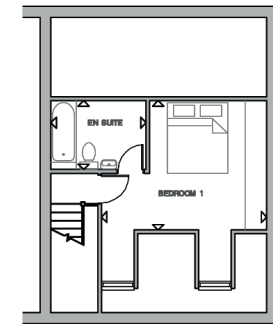
FIRST FLOOR

Bedroom 2
3.35m x 3.48m 11' x 11'5"

Bedroom 3
2.56m x 4.55m 8'5" x 14'11"

Bedroom 4
3.25m x 2.35m 10'8" x 7'8"

Bathroom
2.1m x 2.1m 6'10" x 6'10"



SECOND FLOOR

Bedroom 1
4.55m x 3.56m 14'11" x 11'8"

En Suite
2.6m x 1.9m 8'6" x 6'3"